

# General Purpose IEC Fuses



**NH Fuses (Plain Blades)**  
**gG 400V, 500V, 690V**  
**aM 500V, 690V**

## NH Fuse System



DIN 57 636/VDE 0636 Parts 1, 10, 21, 22, 201

IEC 60269-2

DIN 43 620 Parts 1 to 4 (Standard dimensions)

The use category is identified by two letters, the first indicating the operational class and the second the object to be protected. The Ferraz shawmut range includes fuse-links to DIN VDE 0636 standard for the following uses categories:

- gG: general purpose cable and line protection
- aM: Partial purpose, motor circuit protection
- gTr: general purpose, transformer protection
- gR: general purpose, fast acting
- aR: partial purpose, fast acting

### Classification

The NH system is classed among plug-in fuse systems and is comprised of:

- fuse-base, (possibly including terminal covers and phase barriers)
- fuse-link with blade contact
- fuse-link replacement device (LV HRC fuse puller)

Since the design of this system cannot guarantee non-interchangeability of rated current, it must be handled by a qualified professional.

### Approval symbols



Germany



Austria



Switzerland



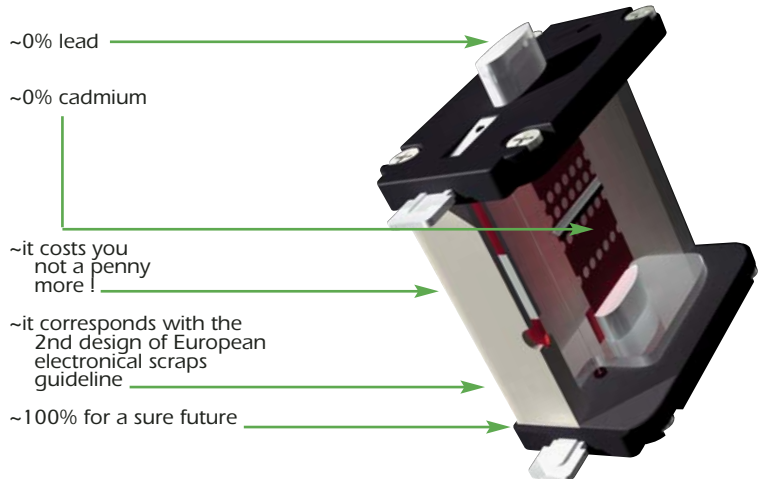
Netherlands



Beige melted



Red non melted



# General Purpose IEC Fuses



## NH Fuses (Plain Blades) aM 500V, 690V aM 500V Size 000 to 4a



Cd/Pb-free

### NH-fuses, 500VAC aM

with non-isolated gripping lugs, double indicator, contact blades, complying with DIN VDE 0636 Part 201 and IEC 60269-2-1

Size	Rated current I <sub>N</sub> (A)	Power dissipation (W)	FS ref.-no.	Previous ref.	Micro- switch <sup>(1)</sup>	weight kg/pce	pack.	Catalog Number
000	2	0,1	K232493	2B613.	Y	0,13	3	NH000AM50V2
000	4	0,2	L232494	2B619.	Y	0,13	3	NH000AM50V4
000	6	0,3	M232495	2B623.	Y	0,13	3	NH000AM50V6
000	10	0,5	N232496	2B631.	Y	0,13	3	NH000AM50V10
000	16	0,7	P232497	2B635.	Y	0,13	3	NH000AM50V16
000	20	0,9	Q232498	2B637.	Y	0,13	3	NH000AM50V20
000	25	1,2	R232499	2B639.	Y	0,13	3	NH000AM50V25
000	32	1,5	S232500	2B643.	Y	0,13	3	NH000AM50V32
000	35	1,6	T232501	2B645.	Y	0,13	3	NH000AM50V35
000	40	1,8	V232502	2B647.	Y	0,13	3	NH000AM50V40
000	50	2,3	W232503	2B651.	Y	0,13	3	NH000AM50V50
000	63	2,9	X232504	2B655.	Y	0,13	3	NH000AM50V63
000	80	3,6	C227863	2B659.	Y	0,13	3	NH000AM50V80
00	100	5,8	Y232505	2B763.	Y	0,20	3	NH00AM50V100
00	125	6,4	Z232506	2B765.	Y	0,20	3	NH00AM50V125
00	160	7,9	J227869	2B769.	Y	0,20	3	NH00AM50V160
0	100	6,0	A232507	2B063.	Y	0,26	3	NH0AM50V100
0	125	7,9	B232508	2B065.	Y	0,26	3	NH0AM50V125
0	160	10,5	C232509	2B069.	Y	0,26	3	NH0AM50V160
0	200	11,8	A227884	2B071.	Y	0,26	3	NH0AM50V200
1	100	5,8	D232510	2B163.	Y	0,42	3	NH1AM50V100
1	125	7,5	E232511	2B165.	Y	0,42	3	NH1AM50V125
1	160	10,4	F232512	2B169.	Y	0,42	3	NH1AM50V160
1	200	14,2	G232513	2B171.	Y	0,42	3	NH1AM50V200
1	224	15,8	H232514	2B173.	Y	0,42	3	NH1AM50V224
1	250	17,5	J232515	2B175.	Y	0,42	3	NH1AM50V250
1	315	22,1	K227962	2B179.	Y	0,42	3	NH1AM50V315
2	250	16,8	K232516	2B275.	Y	0,64	3	NH2AM50V250
2	315	23,1	L232517	2B279.	Y	0,64	3	NH2AM50V315
2	355	26,4	M232518	2B281.	Y	0,64	3	NH2AM50V355
2	400	29,7	N232519	2B283.	Y	0,64	3	NH2AM50V400
2	500	34,4	C227978	2B287.	Y	0,64	3	NH2AM50V500
3	315	21,0	P232520	2B379.	Y	1,05	1	NH3AM50V315
3	355	23,3	Q232521	2B381.	Y	1,05	1	NH3AM50V355
3	400	29,1	R232522	2B383.	Y	1,05	1	NH3AM50V400
3	425	29,1	S232523	2B385.	Y	1,05	1	NH3AM50V425
3	450	34,0	T232524	2B386.	Y	1,05	1	NH3AM50V450
3	500	42,0	V232525	2B387.	Y	1,05	1	NH3AM50V500
3	630	42,0	M227987	2B389.	Y	1,05	1	NH3AM50V630

#### with screw contact

4	400	26,0	*) P233555	8004.400505	N	2,18	1	NH4AM50V400-8
4	500	38,0	*) Q233556	8004.500505	N	2,18	1	NH4AM50V500-8
4	630	50,0	*) E222115	8004.630505	N	2,18	1	NH4AM50V630-8
4	800	65,0	*) V222865	8004.800505	N	2,18	1	NH4AM50V800-8
4	1000	80,0	*) S219137	8004.100505	N	2,18	1	NH4AM50V1000-8
4	1250	110,0	*) V219668	8004.125505	N	2,21	1	NH4AM50V1250-8

#### contact blades for NH-bottom size 4a with swivel unit

4a	500	38,0	*) R233557	8014.500505	N	2,00	1	NH4AAM50V500-8
4a	630	50,0	*) S233558	8014.630505	N	2,00	1	NH4AAM50V630-8
4a	800	65,0	*) T233559	8014.800505	N	2,00	1	NH4AAM50V800-8
4a	1000	80,0	*) V233560	8014.100505	N	2,00	1	NH4AAM50V1000-8
4a	1250	110,0	*) W233561	8014.125505	N	2,00	1	NH4AAM50V1250-8

\*) with indicator on top

(1) Suitable for Microswitch describes page 106

# General Purpose IEC Fuses

## NH Fuses (Plain Blades) aM 500V, 690V aM 690V Size 000 to 4a



Cd/Pb-free

with non-isolated gripping lugs, double indicator, contact blades, complying with DIN VDE 0636 Part 201 and IEC 60269-2-1

NH-fuses, 690VAC aM

Size	Rated current $I_N$ (A)	Power dissipation (W)	FS ref.-no.	Previous ref.	Micro-switch <sup>(1)</sup>	weight kg/pce	pack.	Catalog Number
000	2	0,1	P227851	2C613.	Y	0,13	3	NH000AM69V2
000	4	0,2	Q227852	2C619.	Y	0,13	3	NH000AM69V4
000	6	0,3	R227853	2C623.	Y	0,13	3	NH000AM69V6
000	10	0,5	S227854	2C631.	Y	0,13	3	NH000AM69V10
000	16	0,7	T227855	2C635.	Y	0,13	3	NH000AM69V16
000	20	0,9	V227856	2C637.	Y	0,13	3	NH000AM69V20
000	25	1,2	W227857	2C639.	Y	0,13	3	NH000AM69V25
000	32	1,5	X227858	2C643.	Y	0,13	3	NH000AM69V32
000	35	1,6	Y227859	2C645.	Y	0,13	3	NH000AM69V35
000	40	1,8	Z227860	2C647.	Y	0,13	3	NH000AM69V40
000	50	2,3	A227861	2C651.	Y	0,13	3	NH000AM69V50
000	63	2,9	B227862	2C655.	Y	0,13	3	NH000AM69V63
00	50	2,3	D227864	2C751.	Y	0,20	3	NH00AM69V50
00	63	2,9	E227865	2C755.	Y	0,20	3	NH00AM69V63
00	80	3,6	F227866	2C759.	Y	0,20	3	NH00AM69V80
00	100	5,2	G227867	2C763.	Y	0,20	3	NH00AM69V100
00	125	6,4	H227868	2C765.	Y	0,20	3	NH00AM69V125
0	6	0,3	K227870	2C023.	Y	0,26	3	NH0AM69V6
0	10	0,5	L227871	2C031.	Y	0,26	3	NH0AM69V10
0	16	0,8	M227872	2C035.	Y	0,26	3	NH0AM69V16
0	20	1,0	N227873	2C037.	Y	0,26	3	NH0AM69V20
0	25	1,3	P227874	2C039.	Y	0,26	3	NH0AM69V25
0	32	1,6	Q227875	2C043.	Y	0,26	3	NH0AM69V32
0	35	1,7	R227876	2C045.	Y	0,26	3	NH0AM69V35
0	40	2,0	S227877	2C047.	Y	0,26	3	NH0AM69V40
0	50	2,8	T227878	2C051.	Y	0,26	3	NH0AM69V50
0	63	3,4	V227879	2C055.	Y	0,26	3	NH0AM69V63
0	80	4,9	W227880	2C059.	Y	0,26	3	NH0AM69V80
0	100	6,0	X227881	2C063.	Y	0,26	3	NH0AM69V100
0	125	7,9	Y227882	2C065.	Y	0,26	3	NH0AM69V125
0	160	10,5	Z227883	2C069.	Y	0,26	3	NH0AM69V160
1	16	1,0	B227885	2C135.	Y	0,43	3	NH1AM69V16
1	20	1,2	C227886	2C137.	Y	0,43	3	NH1AM69V20
1	25	1,4	D227887	2C139.	Y	0,43	3	NH1AM69V25
1	32	1,9	E227888	2C143.	Y	0,43	3	NH1AM69V32
1	35	2,0	F227889	2C145.	Y	0,43	3	NH1AM69V35
1	40	2,3	G227890	2C147.	Y	0,43	3	NH1AM69V40
1	50	2,9	H227891	2C151.	Y	0,43	3	NH1AM69V50
1	63	3,6	J227892	2C155.	Y	0,43	3	NH1AM69V63
1	80	4,6	K227893	2C159.	Y	0,43	3	NH1AM69V80
1	100	5,8	L227894	2C163.	Y	0,43	3	NH1AM69V100
1	125	7,5	M227895	2C165.	Y	0,43	3	NH1AM69V125
1	160	10,4	N227896	2C169.	Y	0,43	3	NH1AM69V160
1	200	14,2	P227897	2C171.	Y	0,43	3	NH1AM69V200
1	224	15,8	Q227898	2C173.	Y	0,43	3	NH1AM69V224
1	250	17,5	R227899	2C175.	Y	0,43	3	NH1AM69V250

(1) Suitable for Microswitch describes page 106

# General Purpose IEC Fuses



## NH Fuses (Plain Blades) aM 500V, 690V aM 690V Size 000 to 4a



Cd/Pb-free

### NH-fuses, 690VAC aM

with non-isolated gripping lugs, double indicator, contact blades, complying with DIN VDE 0636 Part 201 and IEC 60269-2-1

Size	Rated current $I_N$ (A)	Power dissipation (W)	FS ref.-no.	Previous ref.	Micro- switch <sup>(1)</sup>	weight kg/pce	pack.	Catalog Number
2	35	1,8	L227963	2C245.	Y	0,64	3	NH2AM69V35
2	40	2,1	M227964	2C247.	Y	0,64	3	NH2AM69V40
2	50	2,7	N227965	2C251.	Y	0,64	3	NH2AM69V50
2	63	3,4	P227966	2C255.	Y	0,64	3	NH2AM69V63
2	80	4,4	Q227967	2C259.	Y	0,64	3	NH2AM69V80
2	100	5,5	R227968	2C263.	Y	0,64	3	NH2AM69V100
2	125	6,4	S227969	2C265.	Y	0,64	3	NH2AM69V125
2	160	9,3	T227970	2C269.	Y	0,64	3	NH2AM69V160
2	200	11,3	V227971	2C271.	Y	0,64	3	NH2AM69V200
2	224	12,2	W227972	2C273.	Y	0,64	3	NH2AM69V224
2	250	16,8	X227973	2C275.	Y	0,64	3	NH2AM69V250
2	300	21,0	Y227974	2C277.	Y	0,64	3	NH2AM69V300
2	315	23,1	Z227975	2C279.	Y	0,64	3	NH2AM69V315
2	355	26,4	A227976	2C281.	Y	0,64	3	NH2AM69V355
2	400	29,7	B227977	2C283.	Y	0,64	3	NH2AM69V400
3	250	14,6	D227979	2C375.	Y	1,05	1	NH3AM69V250
3	300	21,0	E227980	2C377.	Y	1,05	1	NH3AM69V300
3	315	21,0	F227981	2C379.	Y	1,05	1	NH3AM69V315
3	355	23,3	G227982	2C381.	Y	1,05	1	NH3AM69V355
3	400	29,1	H227983	2C383.	Y	1,05	1	NH3AM69V400
3	425	29,1	J227984	2C385.	Y	1,05	1	NH3AM69V425
3	450	34,0	K227985	2C386.	Y	1,05	1	NH3AM69V450
3	500	42,0	L227986	2C387.	Y	1,05	1	NH3AM69V500
with screw contact								
4	400	26,0 *)	Q227990	8004.40056	N	2,00	1	NH4AM69V400-8
4	500	38,0 *)	R227991	8004.50056	N	2,00	1	NH4AM69V500-8
4	630	50,0 *)	S227992	8004.63056	N	1,75	1	NH4AM69V630-8
4	800	65,0 *)	T227993	8004.80056	N	1,75	1	NH4AM69V800-8
4	1000	80,0 *)	V227994	8004.10056	N	2,00	1	NH4AM69V1000-8
contact blades for NH-bottom size 4a with swivel unit								
4a	500	38,0 *)	X227996	8014.50056	N	1,95	1	NH4AM69V500-8
4a	630	50,0 *)	Y227997	8014.63056	N	1,95	1	NH4AM69V630-8
4a	800	65,0 *)	A227999	8014.80056	N	1,95	1	NH4AM69V800-8
4a	1000	80,0 *)	B228000	8014.10056	N	1,95	1	NH4AM69V1000-8

\*) with indicator on top

(1) Suitable for Microswitch describes page 106



# General Purpose IEC Fuses



Cd/Pb-free

## NH Fuses (Plain Blades) gG 400V, 500V, 690V gG 500V Size 000 to 4a

NH-fuses, 500VAC gG

with non-isolated gripping lugs, double indicator, contact blades, complying with DIN VDE 0636 Part 201 and IEC 60269-2-1

Size	Rated current $I_N$ (A)	Power dissipation (W)	FS ref.-no.	Previous ref.	Micro- switch <sup>(1)</sup>	weight kg/pce	pack.	Catalog Number
000	2	1,9	B211946	1B613.	Y	0,13	3	NH000GG50V2
000	4	1,5	M212462	1B619.	Y	0,13	3	NH000GG50V4
000	6	1,6	D213995	1B623.	Y	0,13	3	NH000GG50V6
000	10	1,1	B219651	1B631.	Y	0,13	3	NH000GG50V10
000	16	1,8	K222097	1B635.	Y	0,13	9	NH000GG50V16
000	20	2,3	A222847	1B637.	Y	0,13	9	NH000GG50V20
000	25	2,4	E201185	1B639.	Y	0,13	9	NH000GG50V25
000	32	3,1	Z211438	1B643.	Y	0,13	9	NH000GG50V32
000	35	3,0	C211947	1B645.	Y	0,13	9	NH000GG50V35
000	40	3,7	N212463	1B647.	Y	0,13	9	NH000GG50V40
000	50	4,1	T212974	1B651.	Y	0,13	9	NH000GG50V50
000	63	5,4	E213996	1B655.	Y	0,13	9	NH000GG50V63
000	80	6,5	Y216543	1B659.	Y	0,13	9	NH000GG50V80
000	100	7,5	B219122	1B663.	Y	0,13	9	NH000GG50V100
00	125	10,0	R201863	1B765.	Y	0,20	3	NH00GG50V125
00	160	12,3	P211084	1B769.	Y	0,20	3	NH00GG50V160
0	6	1,6	H213148	1B023.	Y	0,27	3	NH0GG50V6
0	10	1,1	G214159	1B031.	Y	0,27	3	NH0GG50V10
0	16	1,8	Q215179	1B035.	Y	0,27	3	NH0GG50V16
0	20	2,3	R215686	1B037.	Y	0,27	3	NH0GG50V20
0	25	2,4	Y216198	1B039.	Y	0,27	3	NH0GG50V25
0	32	3,1	W216702	1B043.	Y	0,27	3	NH0GG50V32
0	35	3,0	J217220	1B045.	Y	0,27	3	NH0GG50V35
0	40	3,7	P217731	1B047.	Y	0,27	3	NH0GG50V40
0	50	4,1	Z218246	1B051.	Y	0,27	3	NH0GG50V50
0	63	6,6	N218765	1B055.	Y	0,27	3	NH0GG50V63
0	80	8,0	C219284	1B059.	Y	0,27	3	NH0GG50V80
0	100	9,4	D219814	1B063.	Y	0,27	3	NH0GG50V100
0	125	11,8	P222492	1B065.	Y	0,27	3	NH0GG50V125
0	160	14,6	F223013	1B069.	Y	0,27	3	NH0GG50V160
0	200	18,1	C229611	1B071.	Y	0,27	3	NH0GG50V200
0	224	19,2	D229612	1B073.	Y	0,27	3	NH0GG50V224
0	250	20,3	E229613	1B075.	Y	0,27	3	NH0GG50V250
1	16	1,8	M200801	1B135.	N	0,28	3	NH1GG50V16
1	20	2,3	C201344	1B137.	N	0,28	3	NH1GG50V20
1	25	2,4	N201860	1B139.	N	0,28	3	NH1GG50V25
1	32	3,1	L211081	1B143.	N	0,28	3	NH1GG50V32
1	35	3,0	A211600	1B145.	N	0,28	3	NH1GG50V35
1	40	3,7	Y212633	1B147.	N	0,28	3	NH1GG50V40
1	50	4,1	B213648	1B151.	N	0,28	3	NH1GG50V50
1	63	6,6	L214669	1B155.	N	0,28	3	NH1GG50V63
1	80	8,0	S215687	1B159.	N	0,28	3	NH1GG50V80
1	100	9,4	X216703	1B163.	N	0,28	3	NH1GG50V100
1	125	11,8	Q217732	1B165.	Y	0,30	3	NH1GG50V125
1	160	14,6	A218247	1B169.	Y	0,30	3	NH1GG50V160
1	200	18,0	P218766	1B171.	Y	0,30	3	NH1GG50V200
1	224	19,0	D219285	1B173.	Y	0,30	3	NH1GG50V224
1	250	20,0	E219815	1B175.	Y	0,30	3	NH1GG50V250
1	315	20,5	Q228519	1B179.	Y	0,42	3	NH1GG50V315
1	355	23,7	R228520	1B181.	Y	0,42	3	NH1GG50V355

(1) Suitable for Microswitch describes page 106

# General Purpose IEC Fuses



## NH Fuses (Plain Blades) gG 400V, 500V, 690V gG 500V Size 000 to 4a



### NH-fuses, 500VAC gG

with non-isolated gripping lugs, double indicator, contact blades, complying with DIN VDE 0636 Part 201 and IEC 60269-2-1

Cd/Pb-free

Size	Rated current $I_N$ (A)	Power dissipation (W)	FS ref.-no.	Previous ref.	Micro-switch <sup>(1)</sup>	weight kg/pce	pack.	Catalog Number
2	25	2,4	N200802	1B239.	N	0,42	3	NH2GG50V25
2	32	3,1	D201345	1B243.	N	0,42	3	NH2GG50V32
2	35	3,0	P201861	1B245.	N	0,42	3	NH2GG50V35
2	40	3,7	M211082	1B247.	N	0,42	3	NH2GG50V40
2	50	4,1	B211601	1B251.	N	0,42	3	NH2GG50V50
2	63	6,8	Z212634	1B255.	N	0,42	3	NH2GG50V63
2	80	8,3	C213649	1B259.	N	0,42	3	NH2GG50V80
2	100	10,7	M214670	1B263.	N	0,42	3	NH2GG50V100
2	125	12,2	T215688	1B265.	N	0,42	3	NH2GG50V125
2	160	15,0	Y216704	1B269.	N	0,42	3	NH2GG50V160
2	200	18,5	R217733	1B271.	N	0,42	3	NH2GG50V200
2	224	19,2	Q218767	1B273.	N	0,42	3	NH2GG50V224
2	250	20,6	R222494	1B275.	N	0,42	3	NH2GG50V250
2	300	21,0	P200803	1B277.	Y	0,64	3	NH2GG50V300
2	315	25,0	E201346	1B279.	Y	0,64	3	NH2GG50V315
2	355	31,5	Q201862	1B281.	Y	0,64	3	NH2GG50V355
2	400	28,5	N211083	1B283.	Y	0,64	3	NH2GG50V400
2	425	29,2	S228521	1B285.	Y	0,64	3	NH2GG50V425
2	500	35,6	T228522	1B287.	Y	0,64	3	NH2GG50V500
3	250	21,1	C211602	1B375.	N	0,65	1	NH3GG50V250
3	300	20,0	A212635	1B377.	N	0,65	1	NH3GG50V300
3	315	25,0	L213151	1B379.	N	0,65	1	NH3GG50V315
3	355	32,0	K214162	1B381.	N	0,65	1	NH3GG50V355
3	400	34,0	T215182	1B383.	N	1,05	1	NH3GG50V400
3	425	34,0	B216201	1B385.	Y	1,05	1	NH3GG50V425
3	450	38,0	Z216705	1B386.	Y	1,05	1	NH3GG50V450
3	500	43,0	M217223	1B387.	Y	1,05	1	NH3GG50V500
3	630	43,1	S217734	1B389.	Y	1,05	1	NH3GG50V630
3	800	53,2	V228523	1B391.	Y	1,05	1	NH3GG50V800

#### with screw contact

4	400	31,0	*)	A216039	8004.4007	N	2,00	1	NH4GG50V400-8
4	500	35,0	*)	X216542	8004.5007	N	2,00	1	NH4GG50V500-8
4	630	46,6	*)	W217576	8004.6307	N	2,00	1	NH4GG50V630-8
4	800	70,0	*)	E218090	8004.8007	N	2,00	1	NH4GG50V800-8
4	1000	83,3	*)	H201694	8004.1007	N	2,00	1	NH4GG50V1000-8
4	1250	110,0	*)	C213994	8004.1257	N	2,00	1	NH4GG50V1250-8

#### contact blades for NH-bottom size 4a with swivel unit

4a	500	35,0	*)	D201184	8014.5007	N	1,95	1	NH4AGG50V500-8
4a	630	46,6	*)	T205752	8014.6307	N	1,95	1	NH4AGG50V630-8
4a	800	70,0	*)	Y211437	8014.8007	N	1,95	1	NH4AGG50V800-8
4a	1000	83,3	*)	A219650	8014.1007	N	1,95	1	NH4AGG50V1000-8
4a	1250	110,0	*)	J200637	8014.1257	N	1,95	1	NH4AGG50V1250-8

\*) with indicator on top

(1) Suitable for Microswitch describes page 106

# General Purpose IEC Fuses

## NH Fuses (Plain Blades) gG 400V, 500V, 690V gG 690V Size 000 to 4a



Cd/Pb-free

with non-isolated gripping lugs, double indicator, contact blades, complying with DIN VDE 0636 Part 201 and IEC 60269-2-1

NH-fuses, 690VAC gG

Size	Rated current $I_N$ (A)	Power dissipation (W)	FS ref.-no.	Previous ref.	Micro-switch <sup>(1)</sup>	weight kg/pce	pack.	Catalog Number
000	2	1,9	E228440	1C613.	Y	0,13	3	NH000GG69V2
000	4	1,5	F228441	1C619.	Y	0,13	3	NH000GG69V4
000	6	1,6	G228442	1C623.	Y	0,13	3	NH000GG69V6
000	10	1,1	J228444	1C631.	Y	0,13	3	NH000GG69V10
000	16	1,8	K228445	1C635.	Y	0,13	3	NH000GG69V16
000	20	2,3	L228446	1C637.	Y	0,13	3	NH000GG69V20
000	25	2,4	M228447	1C639.	Y	0,13	3	NH000GG69V25
000	32	3,1	N228448	1C643.	Y	0,13	3	NH000GG69V32
000	35	3,0	P228449	1C645.	Y	0,13	3	NH000GG69V35
000	40	3,7	Q228450	1C647.	Y	0,13	3	NH000GG69V40
000	50	4,1	R228451	1C651.	Y	0,13	3	NH000GG69V50
000	63	5,4	S228452	1C655.	Y	0,13	3	NH000GG69V63
000	80	6,5	T228453	1C659.	Y	0,13	3	NH000GG69V80
00	32	3,1	V228454	1C743.	Y	0,20	3	NH00GG69V32
00	35	3,0	W228455	1C745.	Y	0,20	3	NH00GG69V35
00	40	3,7	X228456	1C747.	Y	0,20	3	NH00GG69V40
00	50	4,1	Y228457	1C751.	Y	0,20	3	NH00GG69V50
00	63	5,6	Z228458	1C755.	Y	0,20	3	NH00GG69V63
00	80	6,8	A228459	1C759.	Y	0,20	3	NH00GG69V80
00	100	7,5	B228460	1C763.	Y	0,20	3	NH00GG69V100
00	125	10,0	C228461	1C765.	Y	0,20	3	NH00GG69V125
0	6	1,6	D228462	1C023.	Y	0,27	3	NH0GG69V6
0	10	1,1	E228463	1C031.	Y	0,27	3	NH0GG69V10
0	16	1,8	F228464	1C035.	Y	0,27	3	NH0GG69V16
0	20	2,3	G228465	1C037.	Y	0,27	3	NH0GG69V20
0	25	2,4	H228466	1C039.	Y	0,27	3	NH0GG69V25
0	32	3,1	J228467	1C043.	Y	0,27	3	NH0GG69V32
0	35	3,0	K228468	1C045.	Y	0,27	3	NH0GG69V35
0	40	3,7	L228469	1C047.	Y	0,27	3	NH0GG69V40
0	50	4,1	M228470	1C051.	Y	0,27	3	NH0GG69V50
0	63	6,6	N228471	1C055.	Y	0,27	3	NH0GG69V63
0	80	8,0	P228472	1C059.	Y	0,27	3	NH0GG69V80
0	100	9,4	Q228473	1C063.	Y	0,27	3	NH0GG69V100
0	125	11,8	R228474	1C065.	Y	0,27	3	NH0GG69V125
0	160	14,6	S228475	1C069.	Y	0,27	3	NH0GG69V160
1	16	1,8	T228476	1C135.	N	0,26	3	NH1GG69V16
1	20	2,3	V228477	1C137.	N	0,26	3	NH1GG69V20
1	25	2,4	W228478	1C139.	N	0,26	3	NH1GG69V25
1	32	3,1	X228479	1C143.	N	0,26	3	NH1GG69V32
1	35	3,0	Y228480	1C145.	N	0,26	3	NH1GG69V35
1	40	3,7	Z228481	1C147.	N	0,26	3	NH1GG69V40
1	50	4,1	A228482	1C151.	N	0,26	3	NH1GG69V50
1	63	6,6	B228483	1C155.	N	0,26	3	NH1GG69V63
1	80	8,0	C228484	1C159.	N	0,26	3	NH1GG69V80
1	100	9,4	D228485	1C163.	N	0,26	3	NH1GG69V100
1	125	11,8	E228486	1C165.	N	0,42	3	NH1GG69V125
1	160	14,6	F228487	1C169.	N	0,42	3	NH1GG69V160
1	200	18,0	G228488	1C171.	Y	0,42	3	NH1GG69V200
1	224	19,0	V233261	1C173.	Y	0,42	3	NH1GG69V224
1	250	20,0	W233262	1C175.	Y	0,42	3	NH1GG69V250

(1) Suitable for Microswitch describes page 106

# General Purpose IEC Fuses



## NH Fuses (Plain Blades) gG 400V, 500V, 690V gG 690V Size 000 to 4a



### NH-fuses, 690VAC gG

with non-isolated gripping lugs, double indicator, contact blades, complying with DIN VDE 0636 Part 201 and IEC 60269-2-1

Cd/Pb-free

Size	Rated current $I_N$ (A)	Power dissipation (W)	FS ref.-no.	Previous ref.	Micro- switch <sup>(1)</sup>	weight kg/pce	pack.	Catalog Number
2	32	3,1	H228489	1C243.	N	0,42	3	NH2GG69V32
2	35	3,0	J228490	1C245.	N	0,42	3	NH2GG69V35
2	40	3,7	K228491	1C247.	N	0,42	3	NH2GG69V40
2	50	4,1	L228492	1C251.	N	0,42	3	NH2GG69V50
2	63	6,8	M228493	1C255.	N	0,42	3	NH2GG69V63
2	80	8,3	N228494	1C259.	N	0,42	3	NH2GG69V80
2	100	10,7	P228495	1C263.	N	0,42	3	NH2GG69V100
2	125	12,2	Q228496	1C265.	Y	0,42	3	NH2GG69V125
2	160	15,0	R228497	1C269.	Y	0,42	3	NH2GG69V160
2	200	18,5	S228498	1C271.	Y	0,42	3	NH2GG69V200
2	224	19,2	T228499	1C273.	Y	0,42	3	NH2GG69V224
2	250	20,6	V228500	1C275.	Y	0,42	3	NH2GG69V250
2	300	21,0	W228501	1C277.	Y	0,64	3	NH2GG69V300
2	315	25,0	X228502	1C279.	Y	0,65	3	NH2GG69V315
2	355	31,5	Y228503	1C281.	Y	0,65	3	NH2GG69V355
3	250	21,1	Z228504	1C375.	N	0,65	1	NH3GG69V250
3	300	22,6	A228505	1C377.	N	0,65	1	NH3GG69V300
3	315	25,0	B228506	1C379.	Y	0,65	1	NH3GG69V315
3	355	32,0	C228507	1C381.	Y	0,65	1	NH3GG69V355
3	400	34,0	D228508	1C383.	Y	1,05	1	NH3GG69V400
3	425	34,0	E228509	1C385.	Y	1,05	1	NH3GG69V425
3	500	43,0	F228510	1C387.	Y	1,05	1	NH3GG69V500

#### with screw contact

4	400	31,0	*)	N214004	8004.400765	N	2,00	1	NH4GG69V400-8
4	500	35,0	*)	Y215025	8004.500765	N	2,00	1	NH4GG69V500-8
4	630	46,6	*)	E215537	8004.630765	N	2,00	1	NH4GG69V630-8
4	800	70,0	*)	K216554	8004.800765	N	2,00	1	NH4GG69V800-8

#### contact blades for NH-bottom size 4a with swivel unit

4a	400	31,0	*)	W217070	8014.400765	N	1,95	1	NH4AGG69V400-8
4a	500	35,0	*)	H217587	8014.500765	N	1,95	1	NH4AGG69V500-8
4a	630	46,6	*)	W222107	8014.630765	N	1,95	1	NH4AGG69V630-8
4a	800	70,0	*)	M222858	8014.800765	N	1,95	1	NH4AGG69V800-8

\*) with indicator on top

(1) Suitable for Microswitch describes page 106



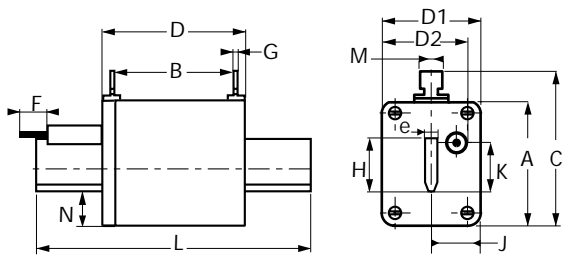
# General Purpose IEC Fuses



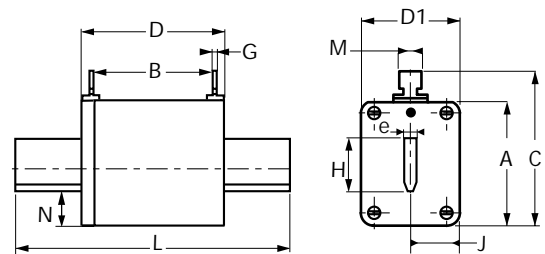
**NH Fuses (Plain Blades)**  
**aM Plastic body with/without French striker**  
**aM 500V Size 0 and 1**

from 40 to 315 A

- BLADE-STYLE FUSES: WITH BLOWN FUSE INDICATOR
- COMPLYING WITH IEC 269.1 and 2.1 NF EN 60269.1 & 2 NF C 63210 AND DIN 43620 STANDARDS
- DIMENSIONS:



With trip-indicator



With blown fuse indicator

Size	A	B	C	D	D1	D2*	F*	G	H	J	K	L	M	N	e	Wgt.
0	46	62	59	67	36	39	14	2,5	15	14,5	14,5	125	10	14,5	6	230g
1	52	64	64	74	47	47	14	3	21	16	14,5	135	10	14,5	6	400g

\* For fuses with trip-indicator

Size	Voltage rating (VAC)	Current rating I <sub>N</sub> (A)	Watts loss (W)	With blown fuse indicator			With trip-indicator		
				Designation	Ref. Number	Catalog Number	Designation	Ref. Number	Catalog Number
0	500	40	2,7	aM 0 / 40	K095114	NH0AM50V40-3	aM 0 / 40 P	N095232	NH0AM50V40-4
		50	3,2	aM 0 / 50	L095115	NH0AM50V50-3	aM 0 / 50 P	R095235	NH0AM50V50-4
		63	3,9	aM 0 / 63	M095116	NH0AM50V63-3	aM 0 / 63 P	X095240	NH0AM50V63-4
		80	5,5	aM 0 / 80	P095118	NH0AM50V80-3	aM 0 / 80 P	Z095242	NH0AM50V80-4
		100	6,5	aM 0 / 100	R095120	NH0AM50V100-3	aM 0 / 100 P	A095243	NH0AM50V100-4
		125	8,5	aM 0 / 125	T095122	NH0AM50V125-3	aM 0 / 125 P	B095244	NH0AM50V125-4
		160	11,5	aM 0 / 160	Y095126	NH0AM50V160-3	aM 0 / 160 P	M095254	NH0AM50V160-4
		200	13,5	aM 0 / 200	R088519	NH0AM50V200-3	aM 0 / 200 P	F088509	NH0AM50V200-4
1	500	80	5,5	aM 1 / 80	R095166	NH1AM50V80-3	aM 1 / 80 P	P095256	NH1AM50V80-4
		100	6,5	aM 1 / 100	T095168	NH1AM50V100-3	aM 1 / 100 P	E095270	NH1AM50V100-4
		125	8,5	aM 1 / 125	C095130	NH1AM50V125-3	aM 1 / 125 P	V095330	NH1AM50V125-4
		160	11,5	aM 1 / 160	D095131	NH1AM50V160-3	aM 1 / 160 P	W095331	NH1AM50V160-4
		200	13,5	aM 1 / 200	E095132	NH1AM50V200-3	aM 1 / 200 P	X095332	NH1AM50V200-4
		250	17	aM 1 / 250	H095135	NH1AM50V250-3	aM 1 / 250 P	A095335	NH1AM50V250-4
		315	24	aM 1 / 315	T088521	NH1AM50V315-3	aM 1 / 315 P	B095336	NH1AM50V315-4

Accessories: Neutral link BSO Reference Number G097710 - BS1 Reference Number H097711  
 Pull-out handle - PMP Reference Number P215592

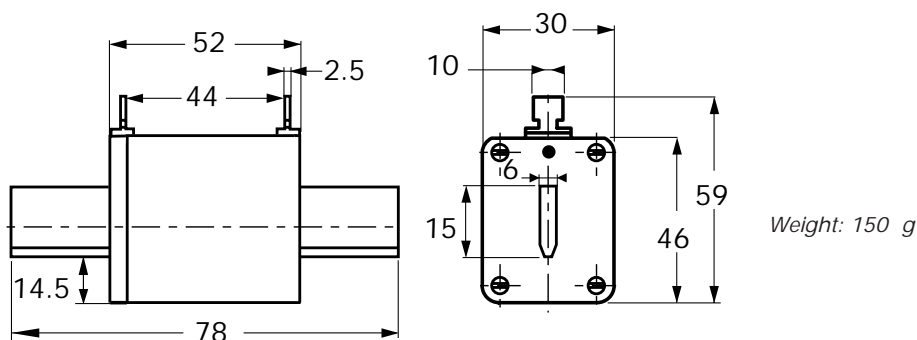
# General Purpose IEC Fuses

## NH Fuses (Plain Blades) aM Plastic body with/without French striker aM 500V Size 00



from 16 to 125 A

- BLADE-STYLE FUSES: WITH BLOWN FUSE INDICATOR
- COMPLYING WITH IEC 269.1 and 2.1 NF EN 60269.1 & 2 NF C 63210 AND DIN 43620 STANDARDS
- DIMENSIONS:



Size	Voltage rating (VAC)	Current rating $I_N$ (A)	Watts loss (W)	With blown fuse indicator		
				Designation	Ref. Number	Catalog Number
00	500	16	0.8	aM 00 L /16	F098307	NH00AM50V16-3
		20	1.1	aM 00 L /20	G098308	NH00AM50V20-3
		25	1.3	aM 00 L /25	H098309	NH00AM50V25-3
		32	1.8	aM 00 L /32	J098310	NH00AM50V32-3
		35	2.0	aM 00 L /35	K098311	NH00AM50V35-3
		40	2.5	aM 00 L /40	L098312	NH00AM50V40-3
		50	3.0	aM 00 L /50	M098313	NH00AM50V50-3
		63	3.6	aM 00 L /63	N098314	NH00AM50V63-3
		80	5.2	aM 00 L /80	P098315	NH00AM50V80-3
	100	6.0	aM 00 L /100	Q098316	NH00AM50V100-3	
400	125	7.0	aM 00 L /125	R098317	NH00AM40V125-3	

Accessories: Neutral link BS00 - Reference Number F097709  
Pull-out handle - PMP - Reference Number P215592

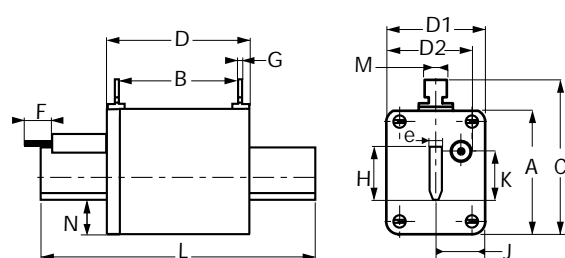
# General Purpose IEC Fuses



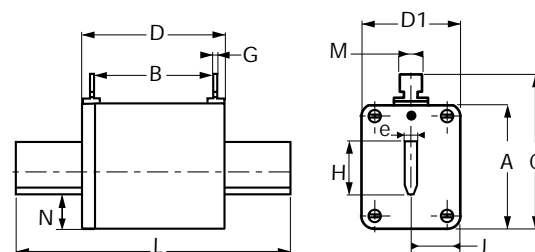
**NH Fuses (Plain Blades)**  
**aM Plastic body with/without French striker**  
**aM 500V Size 2 and 3**

from 125 to 630 A

- BLADE-STYLE FUSES: WITH BLOWN FUSE INDICATOR OR TRIP-INDICATOR
- COMPLYING WITH IEC 269.1 AND 2.1, NF EN 60269.1 & 2 NF C 63210 - 63211 AND DIN 43620
- DIMENSIONS:



With trip-indicator



With blown fuse indicator

Size	A	B	C	D	D1	D2*	F*	G	H	J	K	L	M	N	e	Wgt.
2	60	64	72	74	50	50	14	3	28	19	14,5	150	10	14,5	6	590g
3	75	61	88	75	70	64	14	2,5	36	23	14,5	150	10	18	6	850g

\* For fuses with trip-indicator

Size	Voltage rating (VAC)	Current rating I <sub>N</sub> (A)	Watts loss (W)	With blown fuse indicator			With trip-indicator		
				Designation	Ref. Number	Catalog Number	Designation	Ref. Number	Catalog Number
2	500	125	8,5	aM 2 /125	P095210	NH2AM50V125-3	aM 2 /125 P	Z095196	NH2AM50V125-4
		160	11,5	aM 2 /160	Q095211	NH2AM50V160-3	aM 2 /160 P	S095213	NH2AM50V160-4
		200	13,5	aM 2 /200	R095212	NH2AM50V200-3	aM 2 /200 P	F095340	NH2AM50V200-4
		250	17	aM 2 /250	Q095142	NH2AM50V250-3	aM 2 /250 P	H095342	NH2AM50V250-4
		315	24	aM 2 /315	R095143	NH2AM50V315-3	aM 2 /315 P	J095343	NH2AM50V315-4
		400	28	aM 2 /400	S095144	NH2AM50V400-3	aM 2 /400 P	K095344	NH2AM50V400-4
		500	34	aM 2 /500	W088523	NH2AM50V500-3	aM 2 /500 P	L095345	NH2AM50V500-4
3	500	315	24	aM 3 /315	J095182	NH3AM50V315-3	aM 3 /315 P	Q095073	NH3AM50V315-4
		400	28	aM 3 /400	D095154	NH3AM50V400-3	aM 3 /400 P	W095354	NH3AM50V400-4
		500	34	aM 3 /500	E095155	NH3AM50V500-3	aM 3 /500 P	X095355	NH3AM50V500-4
		630	41	aM 3 /630	F095156	NH3AM50V630-3	aM 3 /630 P	Y095356	NH3AM50V630-4

Accessories: Neutral link BS2 Reference Number J097712 - BS3 Reference Number K097713  
 Pull-out handle - PMP Reference Number P215592

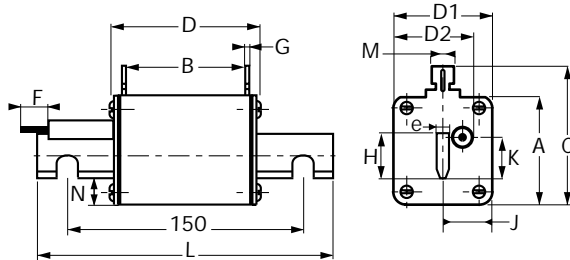
# General Purpose IEC Fuses

## NH Fuses (Plain Blades) aM Plastic body with/without French striker aM 500V Size 4

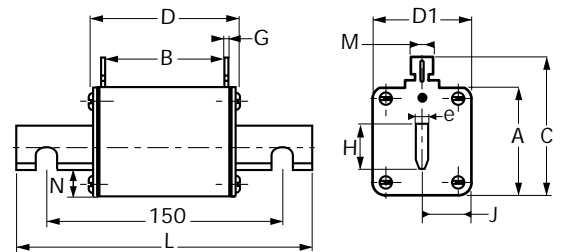


from 630 to 1250 A

- BLADE-STYLE FUSES: WITH BLOWN FUSE INDICATOR OR TRIP-INDICATOR
- COMPLYING WITH IEC 269.1 AND 2.1, NF EN 60269.1 & 2 NF C 63210 - 63211 AND DIN 43620
- DIMENSIONS:



With trip-indicator



With blown fuse indicator

Size	A	B	C	D	D1	D2*	F*	G	H	J	K	L	M	N	e	Wgt.
4	107	61	119	78	90	77	14	2,5	60	27	14,5	200	10	23	8	1900g

\* For fuses with trip-indicator

Size	Voltage rating (VAC)	Current rating I <sub>N</sub> (A)	Watts loss (W)	With blown fuse indicator			With trip-indicator		
				Designation	Ref. Number	Catalog Number	Designation	Ref. Number	Catalog Number
4	500	630	41	aM 4 /630	X098322	NH4AM50V630-3	aM 4 /630 P	M088515	NH4AM50V630-4
		800	49	aM 4 /800	A098325	NH4AM50V800-3	aM 4 /800 P	N088516	NH4AM50V800-4
		1000	70	aM 4 /1000	B098326	NH4AM50V1000-3	aM 4 /1000 P	P088517	NH4AM50V1000-4
	400	1250	75	aM 4 /1250	C098327	NH4AM40V1250-3	aM 4 /1250 P	Q088518	NH4AM40V1250-4

Accessories: Neutral link - BS4 Reference Number M097715  
Pull-out handle - PMP Reference Number P215592



# General Purpose IEC Fuses

## NH Fuses (Plain Blades) aM Ceramic body with French striker aM 690V Size 0 to 3



L216187



P219272



Y212104

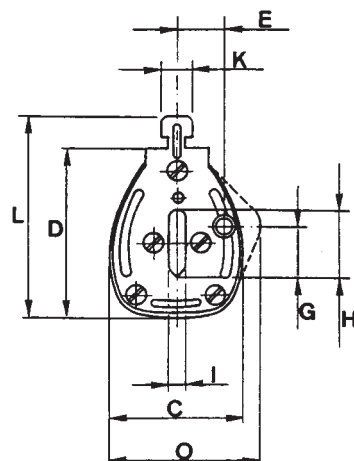
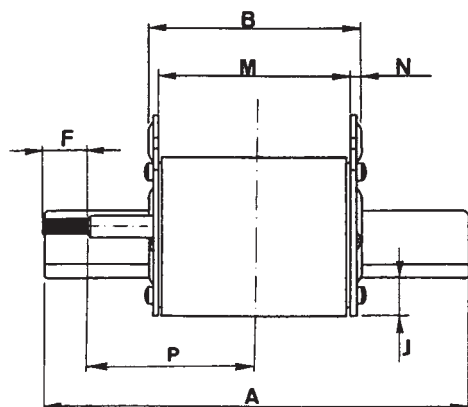


M216188

aM 500 - 690VAC

Size	Rated current $I_N(A)$	Rated voltage (V)	Previous ref.	Ref.-no.	Breaking capacity	Catalog Number
0	32	690V	37443	Z213140	80kA - 690V	NH0AM69V32P-2
0	40	690V	37447	R213639	80kA - 690V	NH0AM69V40P-2
0	50	690V	37451	V214148	80kA - 690V	NH0AM69V50P-2
0	63	690V	37455	Y214657	80kA - 690V	NH0AM69V63P-2
0	80	690V	37459	C215167	80kA - 690V	NH0AM69V80P-2
0	100	690V	37463	F215676	80kA - 690V	NH0AM69V100P-2
0	125	690V	37465	L216187	80kA - 690V	NH0AM69V125P-2
0	160	690V	37469	J216691	80kA - 690V	NH0AM69V160P-2
0	200	500V	37471	X217209	120kA - 500V	NH0AM50V200P-2
1	80	690V	37559	C217720	80kA - 690V	NH1AM69V80P-2
1	100	690V	37563	M218235	80kA - 690V	NH1AM69V100P-2
1	125	690V	37565	A218753	80kA - 690V	NH1AM69V125P-2
1	160	690V	37569	P219272	80kA - 690V	NH1AM69V160P-2
1	200	690V	37571	B222480	80kA - 690V	NH1AM69V200P-2
1	250	690V	37575	T223002	80kA - 690V	NH1AM69V250P-2
1	315	500V	37579	A200790	120kA - 500V	NH1AM50V315P-2
2	125	690V	37665	S201335	80kA - 690V	NH2AM69V125-2
2	160	690V	37669	B201849	80kA - 690V	NH2AM69V160-2
2	200	690V	37671	Y211069	80kA - 690V	NH2AM69V200-2
2	224	690V	37673	P211590	80kA - 690V	NH2AM69V224P-2
2	250	690V	37675	Y212104	80kA - 690V	NH2AM69V250-2
2	315	690V	37679	N212624	80kA - 690V	NH2AM69V315P-2
2	355	690V	37681	A213141	80kA - 690V	NH2AM69V355-2
2	400	690V	37683	S213640	80kA - 690V	NH2AM69V400-2
2	500	500V	37687	W214149	120kA - 500V	NH2AM50V500-2
3	315	690V	37779	Z214658	80kA - 690V	NH3AM69V315P-2
3	355	690V	37781	D215168	80kA - 690V	NH3AM69V355P-2
3	400	690V	37783	G215677	80kA - 690V	NH3AM69V400P-2
3	500	690V	37787	M216188	80kA - 690V	NH3AM69V500P-2
3	630	500V	37789	K216692	120kA - 500V	NH3AM50V630P-2

Pack. : 3 pieces



### Dimensions

	0	1	2	3
A	124.5	134.5	150	150
B	66	67	67	67
C	39	40	56	69
D	49	55	62.5	76
E	14.5	16	19	24
F	15.5	15.5	15.5	15.5
G	14	14.5	14.5	14.5
H	15	20	26	32
I	6	6	6	6
J	14	14	15	16
K	10	10	10	10
L	59	65	72.5	86
M	60	61	61	61
N	3	3	3	3
O	41.5	45	-	-
P	47	52	60	60

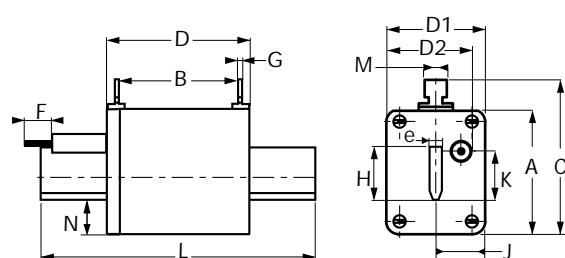
# General Purpose IEC Fuses



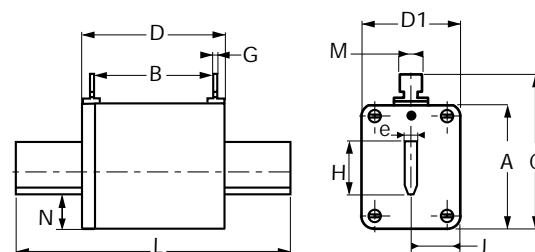
## NH Fuses (Plain Blades) aM Plastic body with/without French striker aM 500V Size 2 and 3

from 125 to 630 A

- BLADE-STYLE FUSES: WITH BLOWN FUSE INDICATOR OR TRIP-INDICATOR
- COMPLYING WITH IEC 269.1 AND 2.1, NF EN 60269.1 & 2 NF C 63210 - 63211 AND DIN 43620
- DIMENSIONS:



With trip-indicator



With blown fuse indicator

Size	A	B	C	D	D1	D2*	F*	G	H	J	K	L	M	N	e	Wgt.
2	60	64	72	74	50	50	14	3	28	19	14,5	150	10	14,5	6	590g
3	75	61	88	75	70	64	14	2,5	36	23	14,5	150	10	18	6	850g

\* For fuses with trip-indicator

Size	Voltage rating (VAC)	Current rating I <sub>N</sub> (A)	Watts loss (W)	With blown fuse indicator			With trip-indicator		
				Designation	Ref. Number	Catalog Number	Designation	Ref. Number	Catalog Number
2	500	125	8,5	aM 2 /125	P095210	NH2AM50V125-3	aM 2 /125 P	Z095196	NH2AM50V125-4
		160	11,5	aM 2 /160	Q095211	NH2AM50V160-3	aM 2 /160 P	S095213	NH2AM50V160-4
		200	13,5	aM 2 /200	R095212	NH2AM50V200-3	aM 2 /200 P	F095340	NH2AM50V200-4
		250	17	aM 2 /250	Q095142	NH2AM50V250-3	aM 2 /250 P	H095342	NH2AM50V250-4
		315	24	aM 2 /315	R095143	NH2AM50V315-3	aM 2 /315 P	J095343	NH2AM50V315-4
		400	28	aM 2 /400	S095144	NH2AM50V400-3	aM 2 /400 P	K095344	NH2AM50V400-4
3	500	500	34	aM 2 /500	W088523	NH2AM50V500-3	aM 2 /500 P	L095345	NH2AM50V500-4
		315	24	aM 3 /315	J095182	NH3AM50V315-3	aM 3 /315 P	Q095073	NH3AM50V315-4
		400	28	aM 3 /400	D095154	NH3AM50V400-3	aM 3 /400 P	W095354	NH3AM50V400-4
		500	34	aM 3 /500	E095155	NH3AM50V500-3	aM 3 /500 P	X095355	NH3AM50V500-4
		630	41	aM 3 /630	F095156	NH3AM50V630-3	aM 3 /630 P	Y095356	NH3AM50V630-4

Accessories: Neutral link BS2 Reference Number J097712 - BS3 Reference Number K097713  
Pull-out handle - PMP Reference Number P215592

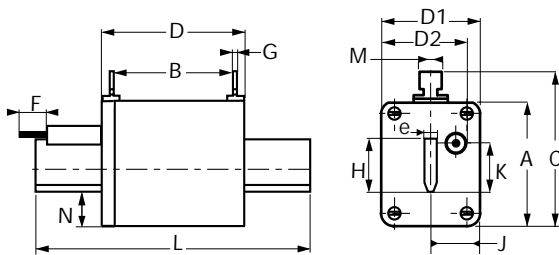
# General Purpose IEC Fuses



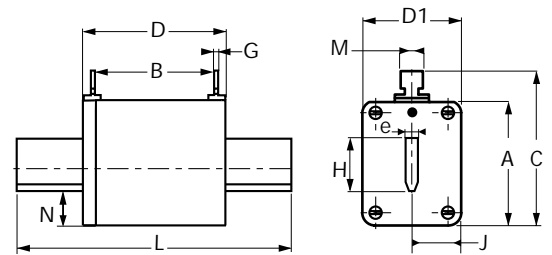
NH Fuses (Plain Blades)  
Plastic body with/without French striker  
gG 500V Size 2 and 3

from 125 to 630 A

- BLADE-STYLE FUSES: WITH BLOWN FUSE INDICATOR or TRIP-INDICATOR
- COMPLYING WITH IEC 269.1 and 2.1, NF EN 60269.1 & 2 NF C 63210 - 63211 AND DIN 43620
- DIMENSIONS:



With trip-indicator



With blown fuse indicator

Size	A	B	C	D	D1	D2*	F*	G	H	J	K	L	M	N	e	Wgt.
2	60	64	72	74	50	50	14	3	28	19	14,5	150	10	14,5	6	590g
3	75	61	88	75	70	64	14	2,5	36	23	14,5	150	10	18	6	850g

\* For fuses with trip-indicator

Size	Voltage rating (VAC)	Current rating I <sub>N</sub> (A)	Watts loss (W)	With blown fuse indicator			With trip-indicator		
				Designation	Ref. Number	Catalog Number	Designation	Ref. Number	Catalog Number
2	500	125	12	gG 2 /125	H095066	NH2GG50V125-3	gG 2 /125 P	X095033	NH2GG50V125-4
		160	15	gG 2 /160	K095068	NH2GG50V160-3	gG 2 /160 P	Y095034	NH2GG50V160-4
		200	19	gG 2 /200	M095070	NH2GG50V200-3	gG 2 /200 P	A095036	NH2GG50V200-4
		250	23	gG 2 /250	G095042	NH2GG50V250-3	gG 2 /250 P	F095041	NH2GG50V250-4
		315	24	gG 2 /315	H095043	NH2GG50V315-3	gG 2 /315 P	K095045	NH2GG50V315-4
		400	33	gG 2 /400	J095044	NH2GG50V400-3	gG 2 /400 P	M095047	NH2GG50V400-4
3	500	315	24	gG 3 /315	W095170	NH3GG50V315-3	gG 3 /315 P	N095048	NH3GG50V315-4
		400	33	gG 3 /400	V095054	NH3GG50V400-3	gG 3 /400 P	P095049	NH3GG50V400-4
		500	36	gG 3 /500	W095055	NH3GG50V500-3	gG 3 /500 P	N095071	NH3GG50V500-4
		630	45	gG 3 /630	X095056	NH3GG50V630-3	gG 3 /630 P	P095072	NH3GG50V630-4

Accessories : Neutral link BS2 Reference Number J097712 - BS3 Reference Number K097713  
Pull-out handle - PMP Reference Number P215592