

# General Purpose IEC Fuses



**NH Fuses (Plain Blades)**  
gG 400V, 500V, 690V  
aM 500V, 690V

## NH Fuse System



DIN 57 636/VDE 0636 Parts 1, 10, 21, 22, 201  
IEC 60269-2  
DIN 43 620 Parts 1 to 4 (Standard dimensions)

The use category is identified by two letters, the first indicating the operational class and the second the object to be protected. The Ferraz shawmut range includes fuse-links to DIN VDE 0636 standard for the following uses categories:

- gG: general purpose cable and line protection
- aM: Partial purpose, motor circuit protection
- gTr: general purpose, transformer protection
- gR: general purpose, fast acting
- aR: partial purpose, fast acting

### Classification

The NH system is classed among plug-in fuse systems and is comprised of:

- fuse-base, (possibly including terminal covers and phase barriers)
- fuse-link with blade contact
- fuse-link replacement device (LV HRC fuse puller)

Since the design of this system cannot guarantee non-interchangeability of rated current, it must be handled by a qualified professional.

### Approval symbols



Germany



Austria



Switzerland



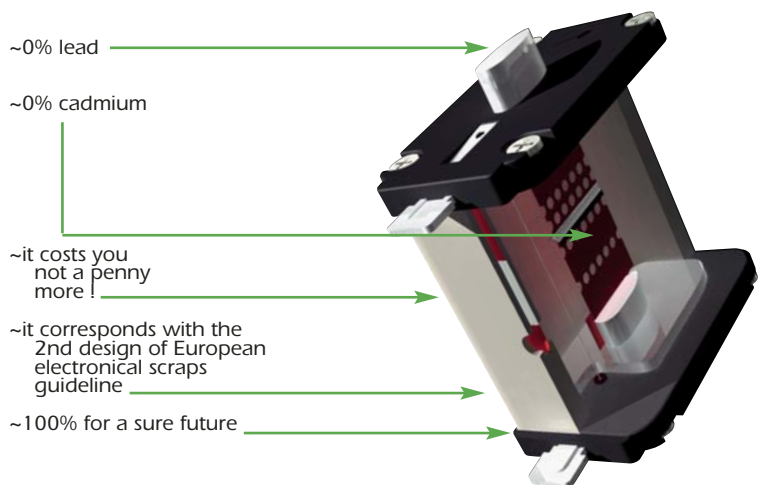
Netherlands



Beige melted



Red non melted



# General Purpose IEC Fuses



Pb-free

## NH Fuses (Plain Blades) gG 400V, 500V, 690V gG 400V Size 000 to 3

### NH-fuses, 400VAC gG

with non-isolated gripping lugs, double indicator, contact blades, complying with DIN VDE 0636Part 201 and IEC 60269-2-1

Size	Rated current $I_N$ (A)	Power dissipation (W)	FS ref.-no.	Previous ref.	Micro-switch <sup>(1)</sup>	weight kg/pce	pack.	Catalog Number
000	2	3,3	Z223674	1A613.	Y	0,12	3	NH000GG40V2
000	4	1,35	A223675	1A619.	Y	0,12	3	NH000GG40V4
000	6	1,7	B223676	1A623.	Y	0,12	3	NH000GG40V6
000	10	1,0	C223677	1A631.	Y	0,12	3	NH000GG40V10
000	16	1,8	D223678	1A635.	Y	0,12	9	NH000GG40V16
000	20	2,0	E223679	1A637.	Y	0,12	9	NH000GG40V20
000	25	2,4	F223680	1A639.	Y	0,12	9	NH000GG40V25
000	32	2,6	G223681	1A643.	Y	0,12	9	NH000GG40V32
000	35	3,2	H223682	1A645.	Y	0,12	9	NH000GG40V35
000	40	3,1	J223683	1A647.	Y	0,12	9	NH000GG40V45
000	50	3,5	K223684	1A651.	Y	0,12	9	NH000GG40V50
000	63	4,6	L223685	1A655.	Y	0,12	9	NH000GG40V63
000	80	5,0	M223686	1A659.	Y	0,12	9	NH000GG40V80
000	100	5,5	N223687	1A663.	Y	0,12	9	NH000GG40V100
00	125	8,6	E223702	1A765.	Y	0,18	3	NH00GG40V125
00	160	9,6	F223703	1A769.	Y	0,18	3	NH00GG40V160
1	35	3,9	J223706	1A145.	N	0,28	3	NH1GG40V35
1	50	4,5	K223707	1A151.	N	0,28	3	NH1GG40V50
1	63	5,7	L223708	1A155.	N	0,28	3	NH1GG40V63
1	80	5,5	M223709	1A159.	N	0,28	3	NH1GG40V80
1	100	7,0	N223710	1A163.	N	0,28	3	NH1GG40V100
1	125	9,1	P223711	1A165.	N	0,30	3	NH1GG40V125
1	160	13,0	Q223712	1A169.	Y	0,30	3	NH1GG40V160
1	200	13,1	R223713	1A171.	Y	0,30	3	NH1GG40V200
1	224	15,1	S223714	1A173.	Y	0,30	3	NH1GG40V224
1	250	16,9	T223715	1A175.	Y	0,30	3	NH1GG40V250
2	35	3,9	T227257	1A245.	N	1,87	3	NH2GG40V35
2	50	4,5	V227258	1A251.	N	1,87	3	NH2GG40V50
2	63	5,7	W227259	1A255.	N	1,87	3	NH2GG40V63
2	80	6,1	F223726	1A259.	N	0,32	3	NH2GG40V80
2	100	7,3	G223727	1A263.	N	0,32	3	NH2GG40V100
2	125	9,1	H223728	1A265.	N	0,32	3	NH2GG40V125
2	160	13,0	J223729	1A269.	N	0,32	3	NH2GG40V160
2	200	13,5	K223730	1A271.	N	0,32	3	NH2GG40V200
2	224	15,1	L223731	1A273.	N	0,32	3	NH2GG40V224
2	250	18,0	M223732	1A275.	N	0,32	3	NH2GG40V250
2	315	19,9	N223733	1A279.	Y	0,40	3	NH2GG40V315
2	355	22,7	P223734	1A281.	Y	0,40	3	NH2GG40V355
2	400	28,0	Q223735	1A283.	Y	0,40	3	NH2GG40V400
3	250	19,9	R223736	1A375.	N	0,45	1	NH3GG40V250
3	315	22,7	S223737	1A379.	N	0,45	1	NH3GG40V315
3	400	28,0	T223738	1A383.	Y	0,45	1	NH3GG40V400
3	500	30,8	V223739	1A387.	Y	0,60	1	NH3GG40V500
3	630	43,0	W223740	1A389.	Y	0,60	1	NH3GG40V630

(1) Suitable for Microswitch describes gG/aM Mechanics for Ceramic body Section page GPEU34

# General Purpose IEC Fuses



## NH Fuses (Plain Blades) gG 400V, 500V, 690V gG 400V Size 000 to 3 - Isolated Lug



Pb-free

### NH-fuses, 400VAC gG

with isolated metal gripping lugs (SGL), double indicator, contact blades, complying with DIN VDE 0636 Part 201 and IEC 60269-2-1

Size	Rated current $I_N$ (A)	Power dissipation (W)	FS ref.-no.	Previous ref.	weight kg/pce	pack.	Catalog Number
000	2	3,3	P223688	1E613.	0,12	3	NH000GG40V2-1
000	4	1,35	Q223689	1E619.	0,12	3	NH000GG40V4-1
000	6	1,7	R223690	1E623.	0,12	3	NH000GG40V6-1
000	10	1,0	S223691	1E631.	0,12	3	NH000GG40V10-1
000	16	1,8	T223692	1E635.	0,12	9	NH000GG40V16-1
000	20	2,0	V223693	1E637.	0,12	9	NH000GG40V20-1
000	25	2,4	W223694	1E639.	0,12	9	NH000GG40V25-1
000	32	2,6	X223695	1E643.	0,12	9	NH000GG40V32-1
000	35	3,2	Y223696	1E645.	0,12	9	NH000GG40V35-1
000	40	3,1	Z223697	1E647.	0,12	9	NH000GG40V40-1
000	50	3,5	A223698	1E651.	0,12	9	NH000GG40V50-1
000	63	4,6	B223699	1E655.	0,12	9	NH000GG40V63-1
000	80	5,0	C223700	1E659.	0,12	9	NH000GG40V80-1
000	100	5,5	D223701	1E663.	0,12	9	NH000GG40V100-1
00	125	8,6	G223704	1E765.	0,18	3	NH00GG40V125-1
00	160	9,6	H223705	1E769.	0,18	3	NH00GG40V160-1
1	35	3,9	V223716	1E145.	0,28	3	NH1GG40V35-1
1	50	4,5	W223717	1E151.	0,28	3	NH1GG40V50-1
1	63	5,7	X223718	1E155.	0,28	3	NH1GG40V63-1
1	80	5,5	Y223719	1E159.	0,28	3	NH1GG40V80-1
1	100	7,0	Z223720	1E163.	0,28	3	NH1GG40V100-1
1	125	9,1	A223721	1E165.	0,30	3	NH1GG40V125-1
1	160	13,0	B223722	1E169.	0,30	3	NH1GG40V160-1
1	200	13,1	C223723	1E171.	0,30	3	NH1GG40V200-1
1	224	15,1	D223724	1E173.	0,30	3	NH1GG40V224-1
1	250	16,9	E223725	1E175.	0,30	3	NH1GG40V250-1
2	35	3,9	L227250	1E245.	2,65	3	NH2GG40V35-1
2	50	4,5	M227251	1E251.	2,65	3	NH2GG40V50-1
2	63	5,7	N227252	1E255.	2,65	3	NH2GG40V63-1
2	80	6,1	X223741	1E259.	0,32	3	NH2GG40V80-1
2	100	7,3	Y223742	1E263.	0,32	3	NH2GG40V100-1
2	125	9,1	Z223743	1E265.	0,32	3	NH2GG40V125-1
2	160	13,0	A223744	1E269.	0,32	3	NH2GG40V160-1
2	200	13,5	B223745	1E271.	0,32	3	NH2GG40V200-1
2	224	15,1	C223746	1E273.	0,32	3	NH2GG40V224-1
2	250	18,0	D223747	1E275.	0,32	3	NH2GG40V250-1
2	315	19,9	E223748	1E279.	0,40	3	NH2GG40V315-1
2	355	22,7	F223749	1E281.	0,40	3	NH2GG40V355-1
2	400	28,0	G223750	1E283.	0,40	3	NH2GG40V400-1
3	250	19,9	H223751	1E375.	0,45	1	NH3GG40V250-1
3	315	22,7	J223752	1E379.	0,45	1	NH3GG40V315-1
3	400	28,0	K223753	1E383.	0,45	1	NH3GG40V400-1
3	500	30,8	L223754	1E387.	0,60	1	NH3GG40V500-1
3	630	43,0	M223755	1E389.	0,60	1	NH3GG40V630-1

Non suitable for Microswitch.

# General Purpose IEC Fuses



Cd/Pb-free

## NH Fuses (Plain Blades) gG 400V, 500V, 690V gG 500V Size 000 to 3 - Isolated Lug

### NH-fuses, 500VAC gG

with isolated metal gripping lugs (SGL), double indicator, contact blades, complying with DIN VDE 0636 Part 201 and IEC 60269-2-1

Size	Rated current $I_N$ (A)	Power dissipation (W)	FS ref.-no.	Previous ref.	weight kg/pce	pack.	Catalog Number
000	2	1,9	C219652	1F613.	0,14	3	NH000GG50V2-1
000	4	1,5	N205770	1F619.	0,14	3	NH000GG50V4-1
000	6	1,6	P212464	1F623.	0,14	3	NH000GG50V6-1
000	10	1,1	V215528	1F631.	0,14	3	NH000GG50V10-1
000	16	1,8	F213997	1F635.	0,14	9	NH000GG50V16-1
000	20	2,3	F218091	1F637.	0,14	9	NH000GG50V20-1
000	25	2,4	K200638	1F639.	0,14	9	NH000GG50V25-1
000	32	3,1	D213489	1F643.	0,14	9	NH000GG50V32-1
000	35	3,0	G201187	1F645.	0,14	9	NH000GG50V35-1
000	40	3,7	D219653	1F647.	0,14	9	NH000GG50V40-1
000	50	4,1	C222849	1F651.	0,14	9	NH000GG50V50-1
000	63	5,4	R212466	1F655.	0,14	9	NH000GG50V63-1
000	80	6,5	N215016	1F659.	0,14	9	NH000GG50V80-1
000	100	7,5	J201189	1F663.	0,14	9	NH000GG50V100-1
00	125	10,0	V200808	1F765.	0,20	3	NH00GG50V125-1
00	160	12,3	W201867	1F769.	0,20	3	NH00GG50V160-1
0	6	1,6	B212636	1F023.	0,26	3	NH0GG50V6-1
0	10	1,1	M213152	1F031.	0,26	3	NH0GG50V10-1
0	16	1,8	E213651	1F035.	0,26	3	NH0GG50V16-1
0	20	2,3	L214163	1F037.	0,26	3	NH0GG50V20-1
0	25	2,4	P214672	1F039.	0,26	3	NH0GG50V25-1
0	32	3,1	V215183	1F043.	0,26	3	NH0GG50V32-1
0	35	3,0	W215690	1F045.	0,26	3	NH0GG50V35-1
0	40	3,7	C216202	1F047.	0,26	3	NH0GG50V40-1
0	50	4,1	A216706	1F051.	0,26	3	NH0GG50V50-1
0	63	6,6	N217224	1F055.	0,26	3	NH0GG50V63-1
0	80	8,0	T217735	1F059.	0,26	3	NH0GG50V80-1
0	100	9,4	D218250	1F063.	0,26	3	NH0GG50V100-1
0	125	11,8	S218769	1F065.	0,26	3	NH0GG50V125-1
0	160	14,6	F219287	1F069.	0,26	3	NH0GG50V160-1
1	16	1,8	H219818	1F135.	0,29	3	NH1GG50V16-1
1	20	2,3	T222496	1F137.	0,29	3	NH1GG50V20-1
1	25	2,4	K223017	1F139.	0,29	3	NH1GG50V25-1
1	32	3,1	R200805	1F143.	0,29	3	NH1GG50V32-1
1	35	3,0	G201348	1F145.	0,29	3	NH1GG50V35-1
1	40	3,7	Q211085	1F147.	0,29	3	NH1GG50V40-1
1	50	4,1	L212116	1F151.	0,29	3	NH1GG50V50-1
1	63	6,6	N213153	1F155.	0,29	3	NH1GG50V63-1
1	80	8,0	M214164	1F159.	0,29	3	NH1GG50V80-1
1	100	9,4	W215184	1F163.	0,29	3	NH1GG50V100-1
1	125	11,8	D216203	1F165.	0,42	3	NH1GG50V125-1
1	160	14,6	B216707	1F169.	0,42	3	NH1GG50V160-1
1	200	18,0	P217225	1F171.	0,42	3	NH1GG50V200-1
1	224	19,0	V217736	1F173.	0,42	3	NH1GG50V224-1
1	250	20,0	E218251	1F175.	0,42	3	NH1GG50V250-1

Non suitable for Microswitch.

# General Purpose IEC Fuses



## NH Fuses (Plain Blades) gG 400V, 500V, 690V gG 500V Size 000 to 3 - Isolated Lug



Cd/Pb-free

### NH-fuses, 500VAC gG

with isolated metal gripping lugs (SGL), double indicator, contact blades, complying with DIN VDE 0636 Part 201 and IEC 60269-2-1

Size	Rated current $I_N$ (A)	Power dissipation (W)	FS ref.-no.	Previous ref.	weight kg/pce	pack.	Catalog Number
2	25	2,4	J219819	1F239.	0,42	3	NH2GG50V25-1
2	32	3,1	V222497	1F243.	0,42	3	NH2GG50V32-1
2	35	3,0	L223018	1F245.	0,42	3	NH2GG50V35-1
2	40	3,7	S200806	1F247.	0,42	3	NH2GG50V40-1
2	50	4,1	H201349	1F251.	0,42	3	NH2GG50V50-1
2	63	6,8	T201865	1F255.	0,42	3	NH2GG50V63-1
2	80	8,3	F211605	1F259.	0,42	3	NH2GG50V80-1
2	100	10,7	P213154	1F263.	0,42	3	NH2GG50V100-1
2	125	12,2	N214165	1F265.	0,42	3	NH2GG50V125-1
2	160	15,0	X215185	1F269.	0,42	3	NH2GG50V160-1
2	200	18,5	E216204	1F271.	0,42	3	NH2GG50V200-1
2	224	19,2	Q217226	1F273.	0,42	3	NH2GG50V224-1
2	250	20,6	F218252	1F275.	0,42	3	NH2GG50V250-1
2	300	21,0	H219289	1F277.	0,64	3	NH2GG50V300-1
2	315	25,0	K219820	1F279.	0,64	3	NH2GG50V315-1
2	355	31,5	M223019	1F281.	0,64	3	NH2GG50V355-1
2	400	28,5	T200807	1F283.	0,64	3	NH2GG50V400-1
3	250	21,1	J201350	1F375.	0,65	1	NH3GG50V250-1
3	300	20,0	S211087	1F377.	0,65	1	NH3GG50V300-1
3	315	25,0	G211606	1F379.	0,65	1	NH3GG50V315-1
3	355	32,0	E212639	1F381.	0,65	1	NH3GG50V355-1
3	400	34,0	H213654	1F383.	1,05	1	NH3GG50V400-1
3	425	34,0	S214675	1F385.	1,05	1	NH3GG50V425-1
3	450	38,0	Z215693	1F386.	1,05	1	NH3GG50V450-1
3	500	43,0	F216205	1F387.	1,05	1	NH3GG50V500-1
3	630	43,1	D216709	1F389.	1,05	1	NH3GG50V630-1

Non suitable for Microswitch.



# General Purpose IEC Fuses



Cd/Pb-free

## NH Fuses (Plain Blades) gG 400V, 500V, 690V gG 400V Size 000 to 3 - Isolated Lug

NH-fuses, 690VAC gG

with isolated metal gripping lugs (SGL), double indicator, contact blades, complying with DIN VDE 0636 Part 201 and IEC 60269-2-1

Size	Rated current $I_N$ (A)	Power dissipation (W)	FS ref.-no.	Previous ref.	weight kg/pce	pack.	Catalog Number
000	2	1,9	D229704	1G613.	0,14	3	NH000GG69V2-1
000	4	1,5	E229705	1G619.	0,14	3	NH000GG69V4-1
000	6	1,6	F229706	1G623.	0,14	3	NH000GG69V6-1
000	10	1,1	H229708	1G631.	0,14	3	NH000GG69V10-1
000	16	1,8	J229709	1G635.	0,14	3	NH000GG69V16-1
000	20	2,3	K229710	1G637.	0,14	3	NH000GG69V20-1
000	25	2,4	L229711	1G639.	0,14	3	NH000GG69V25-1
000	32	3,1	M229712	1G643.	0,14	3	NH000GG69V32-1
000	35	3,0	N229713	1G645.	0,14	3	NH000GG69V35-1
000	40	3,7	P229714	1G647.	0,14	3	NH000GG69V40-1
000	50	4,1	Q229715	1G651.	0,14	3	NH000GG69V50-1
000	63	5,4	R229716	1G655.	0,14	3	NH000GG69V63-1
000	80	6,5	S229717	1G659.	0,14	3	NH000GG69V80-1
00	32	3,1	T229718	1G743.	0,20	3	NH00GG69V32-1
00	35	3,0	V229719	1G745.	0,20	3	NH00GG69V35-1
00	40	3,7	W229720	1G747.	0,20	3	NH00GG69V40-1
00	50	4,1	X229721	1G751.	0,20	3	NH00GG69V50-1
00	63	5,6	Y229722	1G755.	0,20	3	NH00GG69V63-1
00	80	6,8	Z229723	1G759.	0,20	3	NH00GG69V80-1
00	100	7,5	A229724	1G763.	0,20	3	NH00GG69V100-1
00	125	10,0	B229725	1G765.	0,20	3	NH00GG69V125-1
0	6	1,6	C229726	1G023.	0,26	3	NH0GG69V6-1
0	10	1,1	D229727	1G031.	0,26	3	NH0GG69V10-1
0	16	1,8	E229728	1G035.	0,26	3	NH0GG69V16-1
0	20	2,3	F229729	1G037.	0,26	3	NH0GG69V20-1
0	25	2,4	G229730	1G039.	0,26	3	NH0GG69V25-1
0	32	3,1	H229731	1G043.	0,26	3	NH0GG69V32-1
0	35	3,0	J229732	1G045.	0,26	3	NH0GG69V35-1
0	40	3,7	K229733	1G047.	0,26	3	NH0GG69V40-1
0	50	4,1	L229734	1G051.	0,26	3	NH0GG69V50-1
0	63	6,6	M229735	1G055.	0,26	3	NH0GG69V63-1
0	80	8,0	N229736	1G059.	0,26	3	NH0GG69V80-1
0	100	9,4	P229737	1G063.	0,26	3	NH0GG69V100-1
0	125	11,8	Q229738	1G065.	0,26	3	NH0GG69V125-1
0	160	14,6	R229739	1G069.	0,26	3	NH0GG69V160-1
1	16	1,8	S229740	1G135.	0,29	1	NH1GG69V16-1
1	20	2,3	T229741	1G137.	0,29	1	NH1GG69V20-1
1	25	2,4	V229742	1G139.	0,29	1	NH1GG69V25-1
1	32	3,1	W229743	1G143.	0,29	1	NH1GG69V32-1
1	35	3,0	X229744	1G145.	0,29	1	NH1GG69V35-1
1	40	3,7	Y229745	1G147.	0,29	1	NH1GG69V40-1
1	50	4,1	Z229746	1G151.	0,29	1	NH1GG69V50-1
1	63	6,6	A229747	1G155.	0,29	1	NH1GG69V63-1
1	80	8,0	B229748	1G159.	0,29	1	NH1GG69V80-1
1	100	9,4	C229749	1G163.	0,29	1	NH1GG69V100-1
1	125	11,8	D229750	1G165.	0,42	1	NH1GG69V125-1
1	160	14,6	E229751	1G169.	0,42	1	NH1GG69V160-1
1	200	18,0	F229752	1G171.	0,42	1	NH1GG69V200-1
1	224	19,0	G229753	1G173.	0,42	1	NH1GG69V224-1
2	32	3,1	J229755	1G243.	0,43	1	NH2GG69V32-1
2	35	3,0	K229756	1G245.	0,43	1	NH2GG69V35-1
2	40	3,7	L229757	1G247.	0,43	1	NH2GG69V40-1
2	50	4,1	M229758	1G251.	0,43	1	NH2GG69V50-1
2	63	6,8	N229759	1G255.	0,43	1	NH2GG69V63-1
2	80	8,3	P229760	1G259.	0,43	1	NH2GG69V80-1
2	100	10,7	Q229761	1G263.	0,43	1	NH2GG69V100-1
2	125	12,2	R229762	1G265.	0,43	1	NH2GG69V125-1
2	160	15,0	S229763	1G269.	0,43	1	NH2GG69V160-1
2	200	18,5	T229764	1G271.	0,43	1	NH2GG69V200-1
2	224	19,2	V229765	1G273.	0,43	1	NH2GG69V224-1
2	250	20,6	W229766	1G275.	0,43	1	NH2GG69V250-1
2	300	21,0	X229767	1G277.	0,43	1	NH2GG69V300-1
2	315	25,0	Y229768	1G279.	0,65	1	NH2GG69V315-1
2	355	31,5	Z229769	1G281.	0,65	1	NH2GG69V355-1
3	250	21,1	A229770	1G375.	0,65	1	NH3GG69V250-1
3	300	22,6	B229771	1G377.	1,01	1	NH3GG69V300-1
3	315	25,0	C229772	1G379.	1,01	1	NH3GG69V315-1
3	355	32,0	D229773	1G381.	1,01	1	NH3GG69V355-1
3	400	34,0	E229774	1G383.	1,01	1	NH3GG69V400-1
3	425	34,0	F229775	1G385.	1,01	1	NH3GG69V425-1

Non suitable for Microswitch.

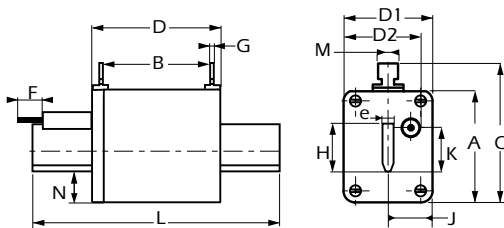
# General Purpose IEC Fuses



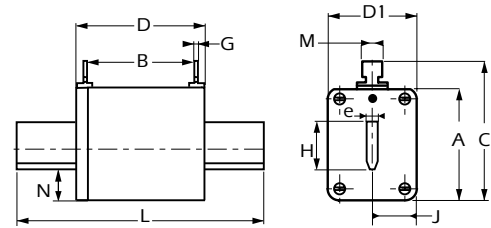
## NH Fuses (Plain Blades) gG Plastic body with/without French striker gG 500V Size 0 and 1

from 40 to 250 A

- BLADE-STYLE FUSES: WITH BLOWN FUSE INDICATOR or TRIP-INDICATOR
- COMPLYING WITH IEC 269.1 AND 2.1 NF EN 60269.1 & 2 NF C 63210 - 63211 AND DIN 43620
- DIMENSIONS:



With trip-indicator



With blown fuse indicator

Size	A	B	C	D	D1	D2*	F*	G	H	J	K	L	M	N	e	Wgt.
0	46	62	59	67	36	39	14	2,5	15	14,5	14,5	125	10	14,5	6	230g
1	52	64	64	74	47	47	14	3	21	16	14,5	135	10	14,5	6	400g

\* For fuses with trip-indicator

Size	Voltage rating (VAC)	Current rating I <sub>N</sub> (A)	Watts loss (W)	With blown fuse indicator			With trip-indicator		
				Designation	Ref. Number	Catalog Number	Designation	Ref. Number	Catalog Number
0	500	40	4.2	gG 0 / 40	A095013	NH0GG50V40-3	gG 0 / 40 P	T095214	NH0GG50V40-4
		50	5.5	gG 0 / 50	B095014	NH0GG50V50-3	gG 0 / 50 P	V095215	NH0GG50V50-4
		63	6.5	gG 0 / 63	C095015	NH0GG50V63-3	gG 0 / 63 P	W095216	NH0GG50V63-4
		80	8.5	gG 0 / 80	D095016	NH0GG50V80-3	gG 0 / 80 P	Y095218	NH0GG50V80-4
		100	9.5	gG 0 / 100	E095017	NH0GG50V100-3	gG 0 / 100 P	A095220	NH0GG50V100-4
		125	12	gG 0 / 125	F095018	NH0GG50V125-3	gG 0 / 125 P	C095222	NH0GG50V125-4
		160	15	gG 0 / 160	G095019	NH0GG50V160-3	gG 0 / 160 P	G095226	NH0GG50V160-4
		200	19	gG 0 / 200	H095020	NH0GG50V200-3			
1	500	80	8.5	gG 1 / 80	K095022	NH1GG50V80-3	gG 1 / 80 P	D095591	NH1GG50V80-4
		100	9.6	gG 1 / 100	P095026	NH1GG50V100-3	gG 1 / 100 P	E095592	NH1GG50V100-4
		125	12.5	gG 1 / 125	T095030	NH1GG50V125-3	gG 1 / 125 P	F095593	NH1GG50V125-4
		160	15	gG 1 / 160	V095031	NH1GG50V160-3	gG 1 / 160 P	G095594	NH1GG50V160-4
		200	19	gG 1 / 200	W095032	NH1GG50V200-3	gG 1 / 200 P	H095595	NH1GG50V200-4
		250	23	gG 1 / 250	Z095035	NH1GG50V250-3	gG 1 / 250 P	K095597	NH1GG50V250-4

Accessories: Neutral link Reference Number Z219304 - Reference Number A219834  
Pull-out handle - PMP Reference Number P215592

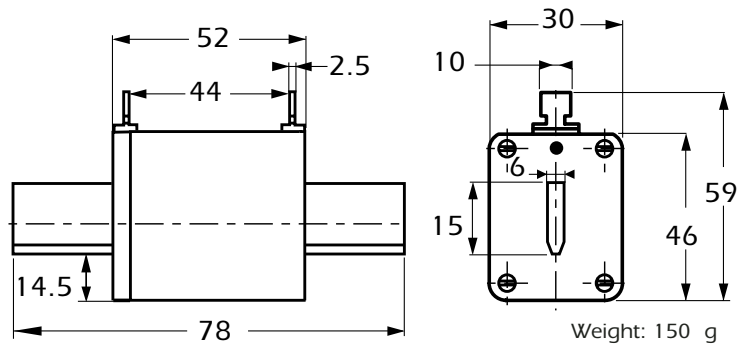
# General Purpose IEC Fuses

## NH Fuses (Plain Blades) gG Plastic body with/without French striker gG 500V Size 00



from 10 to 160 A

- BLADE-STYLE FUSES: WITH BLOWN FUSE INDICATOR
- COMPLYING WITH IEC 269.1 and 2.1 NF EN 60269.1 & 2 NF C 63210 AND DIN 43620 STANDARDS
- DIMENSIONS:



### Main Characteristics

Size	Voltage rating (VAC)	Current rating IN(A)	Watts loss (W)	With BLOWN FUSE indicator		
				Designation	Reference Number	Catalog Number
00	500	10	1	gG 00 L / 10	M098290	NH00GG50V10-3
		16	1.4	gG 00 L / 16	N098291	NH00GG50V16-3
		20	1.8	gG 00 L / 20	P098292	NH00GG50V20-3
		25	2.1	gG 00 L / 25	Q098293	NH00GG50V25-3
		32	3	gG 00 L / 32	R098294	NH00GG50V32-3
		35	3	gG 00 L / 35	S098295	NH00GG50V35-3
		40	3.3	gG 00 L / 40	T098296	NH00GG50V40-3
		50	4.5	gG 00 L / 50	V098297	NH00GG50V50-3
		63	6	gG 00 L / 63	X098299	NH00GG50V63-3
		80	7	gG 00 L / 80	Z098301	NH00GG50V80-3
		100	7.5	gG 00 L / 100	A098302	NH00GG50V100-3
		125	13	gG 00 L / 125	B098303	NH00GG50V125-3
160	15	gG 00 L / 160	D098305	NH00GG50V160-3		

Accessories: Neutral link Z218269  
Pull-out handle - PMP - Part # P215592



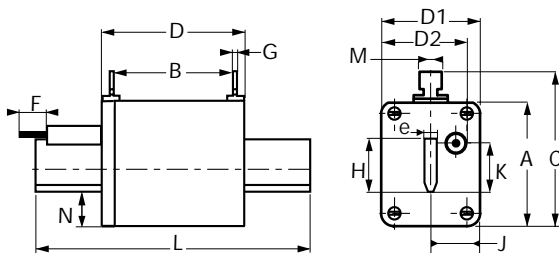
# General Purpose IEC Fuses



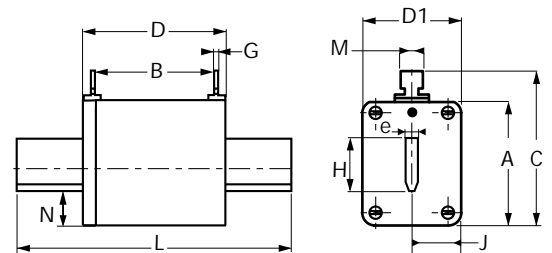
NH Fuses (Plain Blades)  
 Plastic body with/without French striker  
 gG 500V Size 2 and 3

from 125 to 630 A

- BLADE-STYLE FUSES: WITH BLOWN FUSE INDICATOR or TRIP-INDICATOR
- COMPLYING WITH IEC 269.1 and 2.1, NF EN 60269.1 & 2 NF C 63210 - 63211 AND DIN 43620
- DIMENSIONS:



With trip-indicator



With blown fuse indicator

Size	A	B	C	D	D1	D2*	F*	G	H	J	K	L	M	N	e	Wgt.
2	60	64	72	74	50	50	14	3	28	19	14,5	150	10	14,5	6	590g
3	75	61	88	75	70	64	14	2,5	36	23	14,5	150	10	18	6	850g

\* For fuses with trip-indicator

Size	Voltage rating (VAC)	Current rating I <sub>N</sub> (A)	Watts loss (W)	With blown fuse indicator			With trip-indicator		
				Designation	Ref. Number	Catalog Number	Designation	Ref. Number	Catalog Number
2	500	125	12	gG 2 /125	H095066	NH2GG50V125-3	gG 2 /125 P	X095033	NH2GG50V125-4
		160	15	gG 2 /160	K095068	NH2GG50V160-3	gG 2 /160 P	Y095034	NH2GG50V160-4
		200	19	gG 2 /200	M095070	NH2GG50V200-3	gG 2 /200 P	A095036	NH2GG50V200-4
		250	23	gG 2 /250	G095042	NH2GG50V250-3	gG 2 /250 P	F095041	NH2GG50V250-4
		315	24	gG 2 /315	H095043	NH2GG50V315-3	gG 2 /315 P	K095045	NH2GG50V315-4
		400	33	gG 2 /400	J095044	NH2GG50V400-3	gG 2 /400 P	M095047	NH2GG50V400-4
3	500	315	24	gG 3 /315	W095170	NH3GG50V315-3	gG 3 /315 P	N095048	NH3GG50V315-4
		400	33	gG 3 /400	V095054	NH3GG50V400-3	gG 3 /400 P	P095049	NH3GG50V400-4
		500	36	gG 3 /500	W095055	NH3GG50V500-3	gG 3 /500 P	N095071	NH3GG50V500-4
		630	45	gG 3 /630	X095056	NH3GG50V630-3	gG 3 /630 P	P095072	NH3GG50V630-4

Accessories : Neutral link BS2 Reference Number J097712 - BS3 Reference Number K097713  
 Pull-out handle - PMP Reference Number P215592

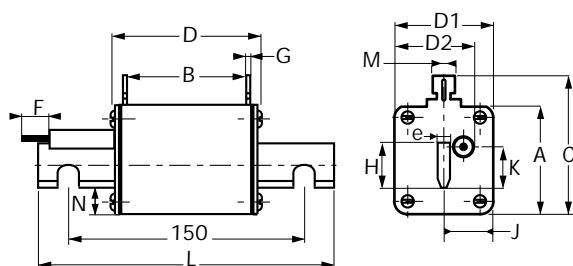
# General Purpose IEC Fuses

## NH Fuses (Plain Blades) gG Plastic body with/without French striker gG 500V Size 4

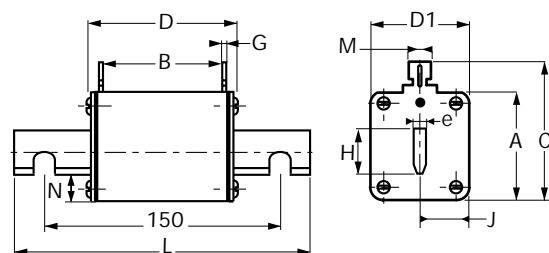


from 630 to 1250 A

- BLADE-STYLE FUSES: WITH BLOWN FUSE INDICATOR or TRIP-INDICATOR
- COMPLYING WITH IEC 269.1 and 2.1, NF EN 60269.1 & 2 NF C 63210 - 63211 AND DIN 43620
- DIMENSIONS:



With trip-indicator



With blown fuse indicator

Size	A	B	C	D	D1	D2*	F*	G	H	J	K	L	M	N	e	Wgt.
4	107	61	119	78	90	77	14	2,5	60	27	14,5	200	10	23	8	1900g

\* For fuses with trip-indicator

Size	Voltage rating (VAC)	Current rating I <sub>N</sub> (A)	Watts loss (W)	With blown fuse indicator			With trip-indicator		
				Designation	Ref. Number	Catalog Number	Designation	Ref. Number	Catalog Number
4	500	630	45	gG 4 / 630	S098318	NH4GG50V630-3	gG 4 / 630 P	G088510	NH4GG50V630-4
		800	51	gG 4 / 800	T098319	NH4GG50V800-3	gG 4 / 800 P	J088512	NH4GG50V800-4
		1000	77	gG 4 / 1000	V098320	NH4GG50V1000-3	gG 4 / 1000 P	K088513	NH4GG50V1000-4
		1250	80	gG 4 / 1250	W098321	NH4GG50V1250-3	gG 4 / 1250 P	L088514	NH4GG50V1250-4

Accessories: Neutral link - BS4 Reference Number M097715  
Pull-out handle - PMP Reference Number P215592

# General Purpose IEC Fuses

## NH Fuses (Plain Blades) gG Ceramic body with French striker gG 690V Size 0 to 3



H216690



R223000



X214656

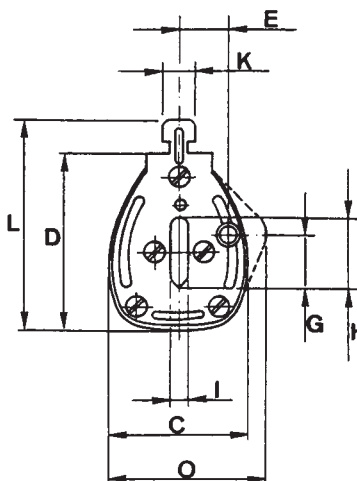
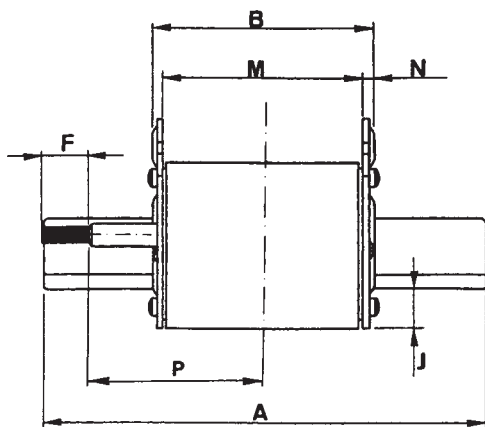


N219271

gG 500 - 690VAC

Size	Rated current $I_N$ (A)	Rated voltage (V)	Previous ref.	Ref.-no.	Breaking capacity	Catalog Number
0	32	690V	36443	P213637	80kA - 690V	NH0GG69V32P-2
0	35	690V	36445	S214146	80kA - 690V	NH0GG69V35P-2
0	40	690V	36447	W214655	80kA - 690V	NH0GG69V40P-2
0	50	690V	36451	B215166	80kA - 690V	NH0GG69V50P-2
0	63	690V	36455	D215674	80kA - 690V	NH0GG69V63P-2
0	80	690V	36459	J216185	80kA - 690V	NH0GG69V80P-2
0	100	690V	36463	H216690	80kA - 690V	NH0GG69V100P-2
0	125	500V	36465	V217207	120kA - 500V	NH0GG50V125P-2
0	160	500V	36469	A217718	120kA - 500V	NH0GG50V160-2
0	200	500V	36471	K218233	120kA - 500V	NH0GG50V200P-2
1	80	690V	36559	Y218751	80kA - 690V	NH1GG69V80P-2
1	100	690V	36563	M219270	80kA - 690V	NH1GG69V100P-2
1	125	690V	36565	P219801	80kA - 690V	NH1GG69V125P-2
1	160	690V	36569	Z222478	80kA - 690V	NH1GG69V160P-2
1	200	690V	36571	R223000	80kA - 690V	NH1GG69V200P-2
1	224	500V	36573	Y200788	120kA - 500V	NH1GG50V224P-2
1	250	500V	36575	Q201333	120kA - 500V	NH1GG50V250P-2
1	315	500V	36579	Z201847	120kA - 500V	NH1GG50V315P-2
1	355	500V	36581	W211067	120kA - 500V	NH1GG50V355P-2
2	125	690V	36665	W212102	80kA - 690V	NH2GG69V125P-2
2	160	690V	36669	L212622	80kA - 690V	NH2GG69V160P-2
2	200	690V	36671	Y213139	80kA - 690V	NH2GG69V200P-2
2	224	690V	36673	Q213638	80kA - 690V	NH2GG69V224P-2
2	250	690V	36675	T214147	80kA - 690V	NH2GG69V250P-2
2	315	690V	36679	X214656	80kA - 690V	NH2GG69V315P-2
2	355	690V	36681	E215675	80kA - 690V	NH2GG69V355P-2
2	400	500V	36683	K216186	120kA - 500V	NH2GG50V400P-2
2	500	500V	36687	W217208	120kA - 500V	NH2GG50V500P-2
3	315	690V	36779	B217719	80kA - 690V	NH3GG69V315P-2
3	355	690V	36781	L218234	80kA - 690V	NH3GG69V355P-2
3	400	690V	36783	Z218752	80kA - 690V	NH3GG69V400P-2
3	500	690V	36787	N219271	80kA - 690V	NH3GG69V500P-2
3	630	500V	36789	Q219802	120kA - 500V	NH3GG50V630P-2

Pack. : 3 pieces



### Dimensions

	0	1	2	3
A	124.5	134.5	150	150
B	66	67	67	67
C	39	40	56	69
D	49	55	62.5	76
E	14.5	16	19	24
F	15.5	15.5	15.5	15.5
G	14	14.5	14.5	14.5
H	15	20	26	32
I	6	6	6	6
J	14	14	15	16
K	10	10	10	10
L	59	65	72.5	86
M	60	61	61	61
N	3	3	3	3
O	41.5	45	-	-
P	47	52	60	60

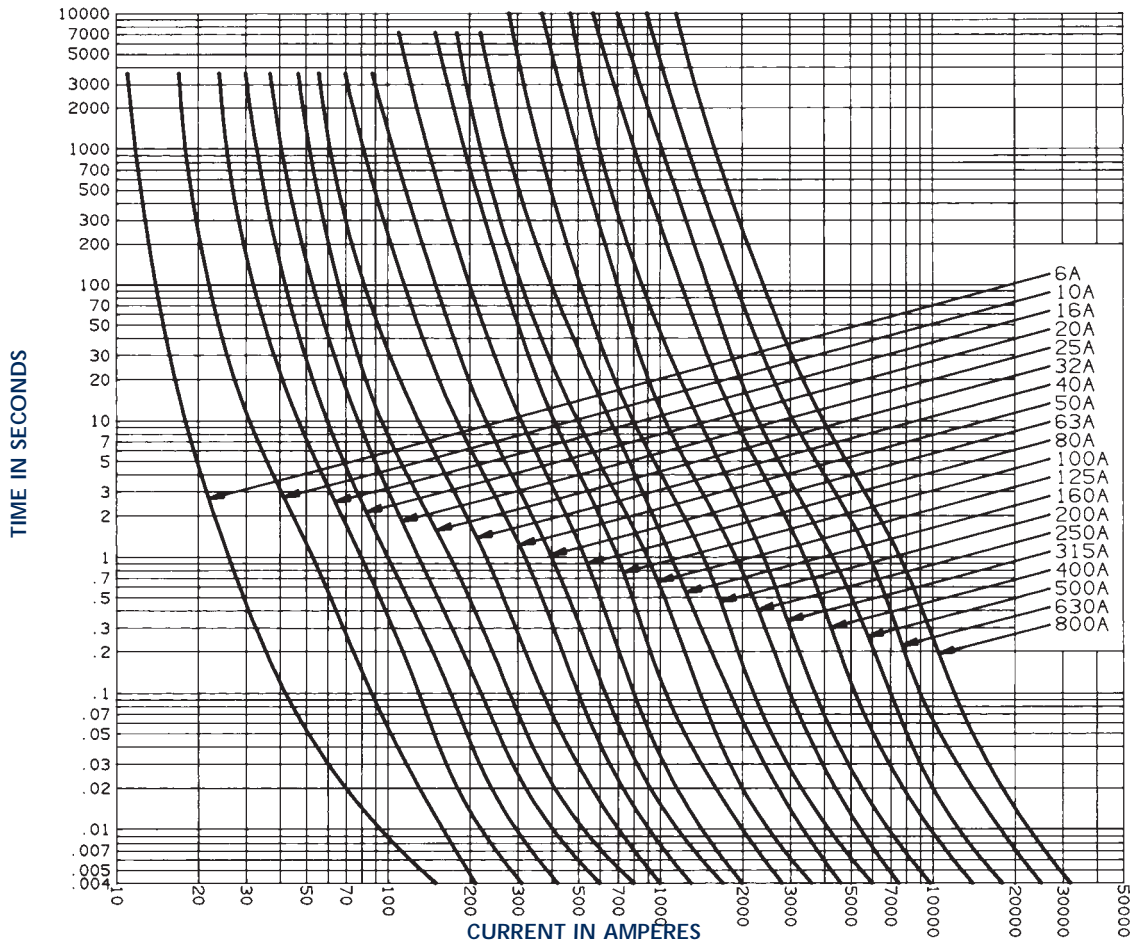
# General Purpose IEC Fuses



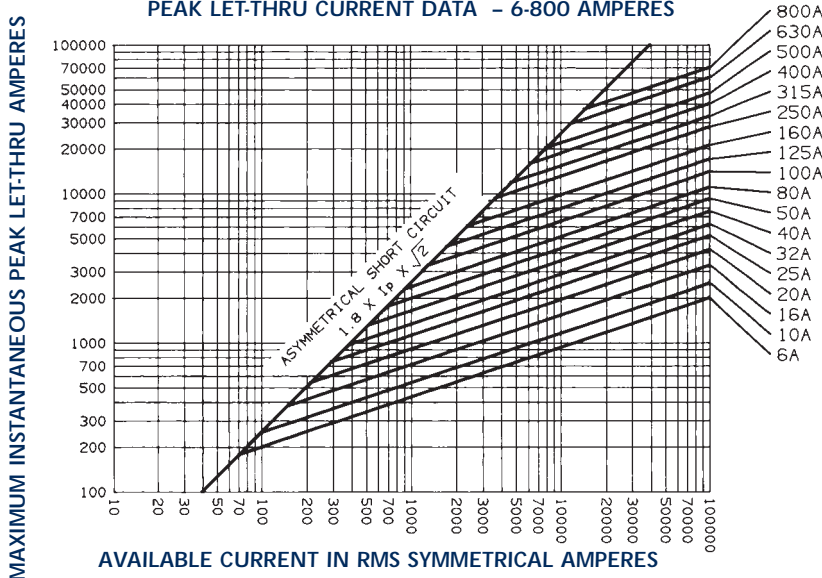
NH Fuses (Plain Blades)  
 gG Ceramic body with French striker  
 gG 690V Size 0 to 3

gG 500 - 690VAC

MELTING TIME - CURRENT DATA - 6-800 AMPERES



PEAK LET-THRU CURRENT DATA - 6-800 AMPERES



Striker

